

PaceSetter®

BC1 & BC2 Kraft-Back Clay-Coated Recycled Boxboard

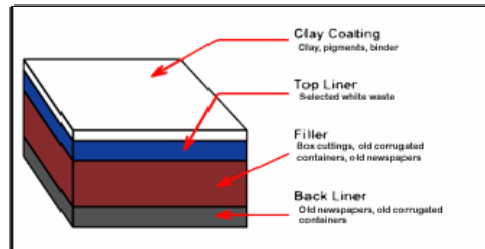
Product Profile - North America

Description

A light-to-medium caliper kraft-back recycled folding cartonboard suitable for offset, flexo and gravure printing. Designed to provide higher stiffness than traditional recycled board. Sizing can be applied for water resistance in frozen or refrigerated carton applications. Can be specified with additional dry tear.

Features

- ◆ Made from 100% recycled fibers with a minimum of 35% post-consumer material
- ◆ Kraft back
- ◆ Meets FDA requirements for direct food contact



Produced at Graphic Packaging International
Battle Creek, MI, USA

Inspection Standards

The following defects are not allowed: scabs, holes, unmarked splices, wrinkles, calendar cuts, shaving/scrap in rolls

Slitting and Winding Requirements

- ◆ Roll widths are cut and sold to the specified width
- ◆ Roll width tolerance is +1/8", -0"
- ◆ Splices – Maximum of 2 per roll (>3" from core or outside edge, >2" between splices in roll)
- ◆ Edges - Clean cut (dust free)
- ◆ Telescoped rolls - <1/4"

Machine Trim

- ◆ PM#1 95" 6 ply Ultra Former
- ◆ PM#2 120" 7 ply Stevens Former



PaceSetter®

BC1 & BC2 Clay-Coated Kraft-Back Recycled Boxboard



Technical Specifications - North America

| Caliper (0.001 ") | TAPPI | | | | | | | | | | |
|---------------------------------------|-------|---------|---------|------|------|------|------|------|------|------|-----|
| | T411 | Caliper | .014 | .016 | .018 | .020 | .022 | .024 | .026 | .028 | |
| Basis Weight-Gauge 6 (lbs/msf) | T410 | Target | 63 | 69 | 77 | 82 | 88 | 96 | 104 | 112 | |
| Taber Stiffness (gf.cm) | MD | T489 | Target | 165 | 215 | 280 | 350 | 450 | 540 | 680 | 770 |
| | | | Minimum | 110 | 143 | 194 | 253 | 303 | 407 | 495 | 605 |
| | CD | T489 | Target | 70 | 90 | 115 | 140 | 185 | 215 | 275 | 320 |
| | | | Minimum | 47 | 55 | 71 | 87 | 109 | 147 | 164 | 229 |

| Specs Common to All Calipers | | % | GE Bright- | ZDT | Sized board only |
|------------------------------|--------|-------------|-------------|-------------|---------------------------------|
| | | Moisture | ness | | Cobb - Back (g/m ²) |
| | Target | 6.2 | 80 | 58 | 50 |
| | Range | 5-7.5% | MIN 79 | MIN 45 | MAX 150 |
| | TAPPI | T412 | T452 | T541 | T441 |

Based on unaged paperboard testing.

Specifications are for quality control measures of paperboard samples from mill reels.

Measurements taken after aging, sheeting or other conversion processes may not match these specifications.