

PaceSetter®

K3 Newsback Clay-coated Recycled Boxboard

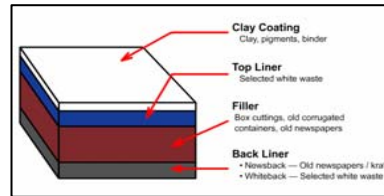
Product Profile - North America

Description

A medium caliper sheet for most consumer products folding carton applications. Designed to provide superior converting and carton performance.

Features

- ◆ Made from 100% recycled fibers
- ◆ Produced on pressure former
- ◆ Two layers of creamy white clay coating
- ◆ Grey back
- ◆ Excellent fiber formation



Produced at Graphic Packaging International
Paper Machine #3, Kalamazoo, MI, USA

Advantages

- ◆ Excellent smoothness and printability
- ◆ Outstanding uniformity and consistency
- ◆ Superior formation, cleanliness and appearance
- ◆ Exceptional value and performance
- ◆ Best recycled board in industry for web fed (offset and flexo) medium-caliper recycled paperboard
 - ❖ Increase in converting press speeds
 - ❖ More sheets between wash-ups
 - ❖ More consistent color
 - ❖ Measurable die cost reduction

Inspection Standards

The following defects are not allowed: scabs, holes, unmarked splices, wrinkles, calendar cuts, shaving/scrap in rolls, telescoped rolls

Slitting and Winding Requirements

- ◆ Roll widths are cut and sold to the specified width
- ◆ Roll width tolerance is +/- 1/8"
- ◆ Splices – Maximum of 2 per roll, minimum of 4" between splices, no closer than 2" of diameter
- ◆ Edges - Clean cut

Machine Trim

- ◆ 20-28 pt 119 7/8"



PaceSetter®

K3 Newsback Clay-coated Recycled Boxboard



Technical Specifications - North America

		TAPPI						
		T411	Caliper	.020	.022	.024	.026	.028
Caliper (0.001 ")		Target	.0201	.0221	.0241	.0261	.0280	
		Range	.0192-.0212	.0212-.0233	.0232-.0253	.0250-.0272	.0270-.0292	
	<hr/>							
Basis Weight (lbs/msf)		T410	Target	82	88	96	104	112
Taber Stiffness (gf.cm)	MD	T489	Target	334	411	507	595	680
			Minimum	287	335	427	503	580
	CD	T489	Target	121	150	192	247	255
			Minimum	99	117	154	194	210
<hr/>								
		GMS	Target	201	248	312	383	416
Sheffield Smoothness	T538	Target	100	125	125	125	130	
		Maximum	185	185	185	185	185	
% Moisture	T412	Target	6.2	6.3	6.4	6.5	6.5	
		Range	5.3-7.4	5.3-7.5	5.4-7.5	5.4-7.6	5.4-7.7	

Specs Common to All Calipers	GE Brightness	Dextrin Glue (seconds)	Parker Print
Target	80	20	2
Range	MINIMUM 78	MAXIMUM 40	MAXIMUM 2.5
TAPPI	T452		

All physical measurements done at 23°C 50% relative humidity.

Specifications are for quality control measures of paperboard samples from mill reels.

Measurements taken after sheeting or other conversion processes may not match these specifications.