

PaceSetter®

MDT1 Newsback Clay-Coated Recycled Boxboard

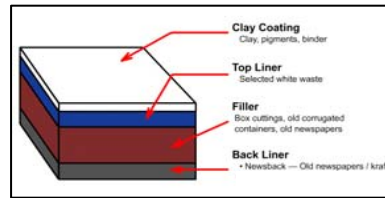
Product Profile - North America

Description

A medium-caliper recycled cartonboard suitable for most folding carton applications.

Features

- ◆ Made from 100% recycled fibers
- ◆ Post-consumer material averages 45% for all grades, and ranges between 35% and 65% depending on the grade
- ◆ Produced on Manchester Multiformer
- ◆ News back
- ◆ 6 plies
- ◆ Meets FDA requirements for direct food contact



Produced at Graphic Packaging International
Middletown, Ohio, USA

Inspection Standards

The following defects are not allowed: scabs, holes, unmarked splices, wrinkles, calendar cuts, shaving/scrap in rolls

Slitting and Winding Requirements

- ◆ Roll widths are cut and sold to the specified width
- ◆ Roll width tolerance is +1/8", -0"
- ◆ Splices – Maximum of 2 per roll (>3" from core or outside edge, >2" between splices in roll)
- ◆ Edges - Clean cut (dust free)
- ◆ Telescoped rolls - <1/4"

Machine Trim

- ◆ PM#6 122.25"



PaceSetter®

MDT1 Newsback Clay-Coated Recycled Boxboard



Technical Specifications - North America

		TAPPI						
Caliper (0.001 “)		T411	Caliper	.016	.018	.019	.020	.022
Basis Weight (lbs/msf)		T410	Target	69	77	79	82	88
Taber Stiffness (gf.cm)	MD	T489	Target	195	259	295	332	405
			Minimum	170	234	265	307	360
	CD	T489	Target	68	89	102	114	139
			Minimum	58	79	93	104	129
Specs Common to All Calipers				GE Brightness	ZDT	Sheffield Smoothness	% Moisture	
			Target	80	60	150	6.5	
			Range	78-82	min 45	120-180	5-8%	
			TAPPI	T452		T538	T412	

All physical measurements are based on unconditioned paperboard.
 Specifications are for quality control measures of paperboard samples from mill reels.
 Measurements taken after sheeting or other conversion processes may not match these specifications.