

PaceSetter®

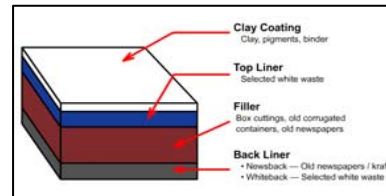
K3 Newsback Clay-Coated Recycled Boxboard

Description

A medium caliper sheet for most consumer products folding carton applications. Designed to provide superior converting and carton performance.

Features

- ◆ Made from 100% recycled fibers
- ◆ Produced on pressure former
- ◆ Two layers of creamy white clay coating
- ◆ Grey back
- ◆ Excellent fiber formation



Produced at Graphic Packaging International
Paper Machine #3, Kalamazoo, MI, USA

Advantages

- ◆ Excellent smoothness and printability
- ◆ Outstanding uniformity and consistency
- ◆ Superior formation, cleanliness and appearance
- ◆ Exceptional value and performance
- ◆ Best recycled board in industry for web fed (offset and flexo) medium-caliper recycled paperboard
 - ❖ Increase in converting press speeds
 - ❖ More sheets between wash-ups
 - ❖ More consistent color
 - ❖ Measurable die cost reduction

Inspection Standards

The following defects are not allowed: scabs, holes, unmarked splices, wrinkles, calendar cuts, shaving/scrap in rolls, telescoped rolls

Slitting and Winding Requirements

- ◆ Roll widths are cut and sold to the specified width
- ◆ Roll width tolerance is +/- 1/8"
- ◆ Splices – Maximum of 2 per roll, minimum of 4" between splices, no closer than 2" of diameter
- ◆ Edges - Clean cut

Machine Trim

- ◆ 20-28 pt 119 7/8"



PaceSetter®

K3 Newsback Clay-Coated Recycled Boxboard



Technical Specifications - North America

		TAPPI						
Caliper (0.001 “)	T411	Caliper	.020	.022	.024	.026	.028	
Basis Weight (lbs/msf)	T410	Nominal	82	88	96	104	112	
Taber Stiffness (gf.cm)	MD	T489	Nominal	307	365	466	530	615
			Minimum	287	335	427	503	580
	CD	T489	Nominal	114	137	172	210	240
			Minimum	99	117	154	194	210
Geometric Mean		Nominal	187	224	312	334	384	
Sheffield Smoothness	T538	Nominal	100	125	125	125	130	
		Maximum	185	185	185	185	185	

Specs Common to All Calipers		Brightness	Moisture, %
	Nominal	80	6.2 - 6.4
	Range	Minimum 78	5.3 - 7.7
	TAPPI	T452	T412

All physical measurements done at 23°C 50% relative humidity.

Specifications are for quality control measures of paperboard samples from mill reels.

Measurements taken after sheeting or other conversion processes may not match these specifications.